

## History

We begin to explore what is *prehistory*, with particular focus on the Stone Age. We explore what life was like for early humans and endeavour to answer our big question, 'How did Britain change during prehistory?'

### The Stone Age

## English

Our English texts this half term are Gorilla by Anthony Browne, Stone Age Boy (in keeping with our History unit) and we begin the wonderful poem The Magic Box. We will use these rich texts to consolidate our sentence writing and focus on imperative verbs, prepositions, adverbial phrases, questions marks, alliteration, similes and personification!



## PE

Ball skills  
Netball  
Basket Ball  
Forest School

## Computing

We will be logging on at our new school and developing our desktop publishing skills.

## Art

Our focus in Art will be exploring colour through creative painting.  
We will be using Anthony Browne as our inspiration and looking at how he uses warm and cool colours to show different moods.

This half term our main topics of study are:

## The Stone Age Light and Shadow

## PSHE

As we start this new chapter of school life, Family and Relationships will be explored with particular focus on friendships, respecting differences in others, conflict resolution and communication.

## Autumn 1 2025 Year 3

## RE

This half term we will be focusing on Christianity. Using the Big Frieze artwork to help us to explore the 'big story' of the Bible. We will be creating our own artwork to represent the key concepts – Creation, Fall, People of God, Incarnation, Gospel, Salvation and Kingdom of God.

## Science



Our topic for science is 'Light'. We will explore how shadows are formed, reflective materials and ensure we understand key vocabulary – transparent, translucent, opaque.

## Maths

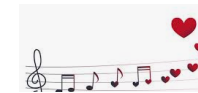
### Place Value

We will begin by exploring our new maths resources. Through use of practical resources, games and active learning we will be working on understanding the value of each digit and ensuring we can count in 1's, 10's, 50's, 100's. We spend a lot of time securing these concepts before moving on to addition methods.



## Music

Identify key features of a ballad. Write and perform own lyrics.



## French

Greetings, Names, Numbers





# Autumn 1 Newsletter 2025

## Year 3

### **Welcome to Year 3 and the Autumn Term!**

**We wanted to update you on a few things you may need to know this term.**

**Reading** – Reading for pleasure is the key to reading success, so reading any story to your child will be of huge benefit to them. Any books they enjoy will help to engage them and ignite their love of books and reading – so snuggle up and get reading together. We will be focusing on developing a range of reading skills in year 3 including: reading fluently and with expression; answering questions about the text including using inference and choosing appropriate books that interest them.

**PE** – Our PE days are

3B – Monday and Thursday, 3PW – Monday and Wednesday, 3NL – Monday and Friday

Children should come to school on PE days dressed ready for PE. We will always try to go out even in cold and damp weather so children will need appropriate clothing every week.

**Homework** – Reading, Maths (Learning By Questions), spelling words and 1 other per week.

**Log-Ins** – All computer log-in details will be stuck in reading records over the course of the next few weeks. Homework will be accessed on DB Primary and LBQ – full information to follow.

**General reminders** – Please ensure your child has a water bottle, a spare set of trainers and a coat in school each day. Children will be asked to change into different trainers when going on the field to avoid walking mud back into the school building.



### Dates for your diary

**Monday 22 September, 3:30** – Parents invited to the school hall to hear about the year 3 curriculum.

*(3:30–4:00 creche for younger children available)*

**Friday 24 October** - INSET DAY – children not in school.

**Forest school – Autumn**

*Your child will either go to the forest on a Wednesday OR Thursday afternoon.*

3PW – 10/11 Sept, 17/18 Sept, 24/25 Sept, 1/2 Oct

3B – 8/9 Oct, 15/16 Oct, 22/23 Oct, 5/6 Nov

3NL – 12/13 Nov, 19/ Nov (both groups will go on Weds), 26/27 Nov, 3/4 Dec

**Forthcoming dates:-**

Thursday 20<sup>th</sup> November - Trip to Haslemere Museum